

**GUIDE PRICE £360,000**

Michaelwood Way, Bolsover,  
Chesterfield,



Welcome to **BuckleyBrown**, where every home is carefully presented, so you can explore with clarity and confidence.

**BuckleyBrown**  
ESTATE AGENTS

"Modern, beautifully maintained and ready to move into, this impressive detached home combines generous living space with a superb outdoor setting."

Jasmine, Valuer



## WHERE MODERN LIVING MEETS FAMILY COMFORT

*Modern family living at its finest, delivering spacious accommodation and a superb setting for family life*

Beautifully presented throughout and ready to move straight into, this impressive four-bedroom detached home offers the perfect combination of style, space and practicality. Built in October 2020 and meticulously maintained by the current owners, the property boasts generous and well-proportioned accommodation including four bedrooms, two bathrooms and versatile living spaces ideally suited to modern family life. Externally, a superb rear garden provides ample room for entertaining, relaxing and family enjoyment, while a driveway for two vehicles and a garage add further convenience. This turnkey home and its thoughtfully designed layout, presents a fantastic opportunity for buyers seeking a contemporary home with space, comfort and curb appeal in equal measure.



## THE FINER DETAILS

This beautifully presented detached family home offers four well-proportioned bedrooms, two bathrooms including an en-suite to the master bedroom, a spacious lounge, an impressive open-plan kitchen/dining room, utility room, downstairs WC, an enclosed rear garden, and a private driveway providing off-road parking for two vehicles alongside a detached garage.

Upon entering the property, you are welcomed by a bright entrance hallway with a useful built-in storage cupboard. The spacious lounge enjoys a bay window to the front, creating a light and comfortable living space. To the rear, the impressive open-plan kitchen/dining room forms the heart of the home, featuring a range of modern units, integrated appliances, a central island and ample space for family dining. French doors open directly onto the rear garden, while a separate utility room provides additional storage, laundry facilities and side access. A convenient downstairs WC completes the ground floor accommodation.

Upon entering the property, you are welcomed by a bright entrance hallway with a built-in storage cupboard. The spacious lounge features a bay window, creating a light and comfortable living space. To the rear, the open-plan kitchen/dining room forms the heart of the home, with ample storage, integrated appliances and a central island with space for informal seating and plenty more space for a dining table. French doors open onto the rear garden, enhancing natural light and flow. A separate utility room provides additional storage, laundry facilities and side access, while a convenient downstairs WC completes the ground floor.

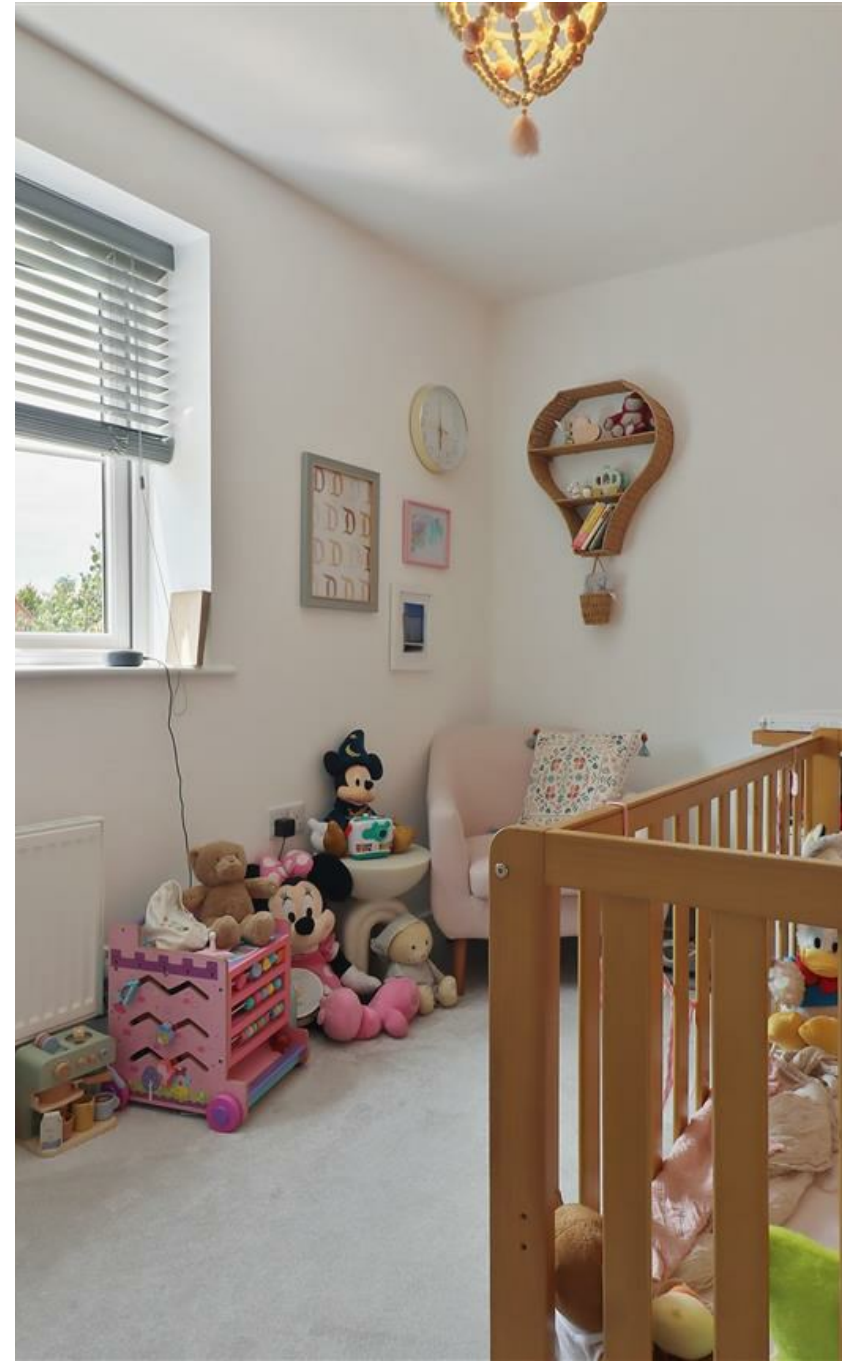
The first floor offers four generously sized bedrooms, providing flexible accommodation for growing families or those requiring home office space. The master bedroom enjoys the added luxury of a private en-suite shower room, creating a peaceful retreat. The remaining bedrooms are served by a stylish family bathroom, fitted with a contemporary four-piece suite comprising a bath and separate shower enclosure. The layout has been carefully designed to maximise both comfort and practicality, making it perfectly suited to modern family life.

Externally, the property continues to impress with a spacious enclosed rear garden, offering an excellent combination of lawned and paved areas ideal for relaxing, entertaining and family enjoyment. The garden provides a safe and private outdoor environment and benefits from gated access leading directly to the driveway. To the rear of the property, a private driveway provides off-road parking for two vehicles and leads to a detached brick-built garage, offering additional storage or secure parking.





**BuckleyBrown**  
ESTATE AGENTS







## LIFE IN BOLSOVER

***Bolsover is a small market town in north-east Derbyshire, sitting on a hilltop between Chesterfield and Mansfield. Its elevated position means it has wide views across the surrounding Nottinghamshire and Derbyshire countryside, which is one of its defining features.***

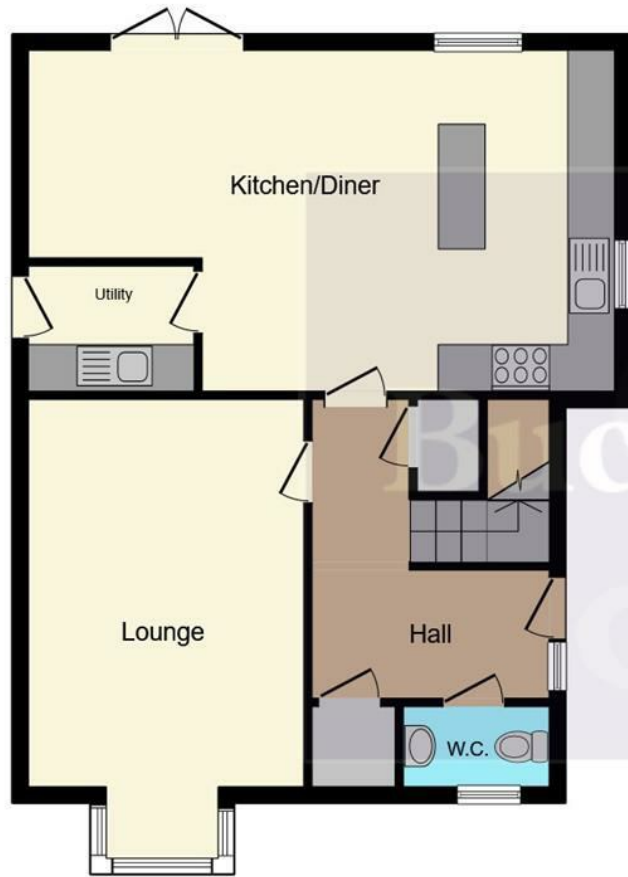
Bolsover is a small market town in north-east Derbyshire, sitting on a hilltop between Chesterfield and Mansfield. Its elevated position means it has wide views across the surrounding Nottinghamshire and Derbyshire countryside, which is one of its defining features.

One of its most famous landmarks is Bolsover Castle, a dramatic 17th-century castle managed by English Heritage. It dominates the skyline and plays a big role in tourism and local identity, bringing visitors into the town throughout the year.

The town itself is fairly compact, with a traditional high street, local shops, takeaways, pubs, and essential services. It's not a large commercial centre, so residents typically rely on nearby Chesterfield for larger retail, supermarkets, and employment opportunities.

It's also well placed for commuting, with easy road access to Chesterfield, Mansfield, Sheffield, and Nottingham via the M1

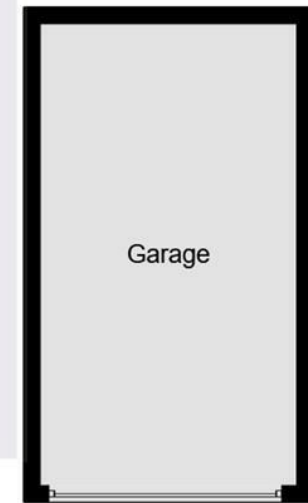




Ground Floor



First Floor



Garage

Total floor area: 154.8 sq.m. (1,667 sq.ft.)

This floor plan is for illustrative purposes only. It is not drawn to scale. Any measurements, floor areas (including any total floor area), openings and orientations are approximate. No details are guaranteed, they cannot be relied upon for any purpose and do not form any part of any agreement. No liability is taken for any error, omission or misstatement. A party must rely upon its own inspection(s). Powered by [www.Propertybox.io](http://www.Propertybox.io)

## Key Features

### Modern detached family home

---

Four bedrooms and three bathrooms including en-suite

---

Spacious open-plan kitchen/dining room with island

---

Bright lounge with bay window

---

Enclosed rear garden with patio and lawn

---

Excellent location close to M1 links and Bolsover Castle

---

Aproximate Size 1667 Sq. ft

---

Energy Performance Certificate (EPC)

Rating B

---

Council Tax Band D

---

**BuckleyBrown**  
ESTATE AGENTS



These particulars are intended as a guide only and do not form part of any offer or contract. All descriptions, measurements, images and plans are provided for illustration purposes and should not be relied upon as statements of fact. Prospective purchasers should satisfy themselves as to the accuracy of the information. Buckley Brown Estate Agents accept no liability for any loss arising from reliance on these details.

© Buckley Brown Estate Agents 2026. All rights reserved.

Exceptional homes deserve  
exceptional representation.

Let's Chat.

01246 605121

[bolsover@buckleybrown.co.uk](mailto:bolsover@buckleybrown.co.uk)

[buckleybrown.co.uk](https://www.buckleybrown.co.uk)

**BuckleyBrown**  
ESTATE AGENTS